

Future Higher Education Diversity TAFE's Role



Ili Pelletier
General Manager
TAFE NSW Higher Education

TAFE^{NSW}
HIGHER
EDUCATION

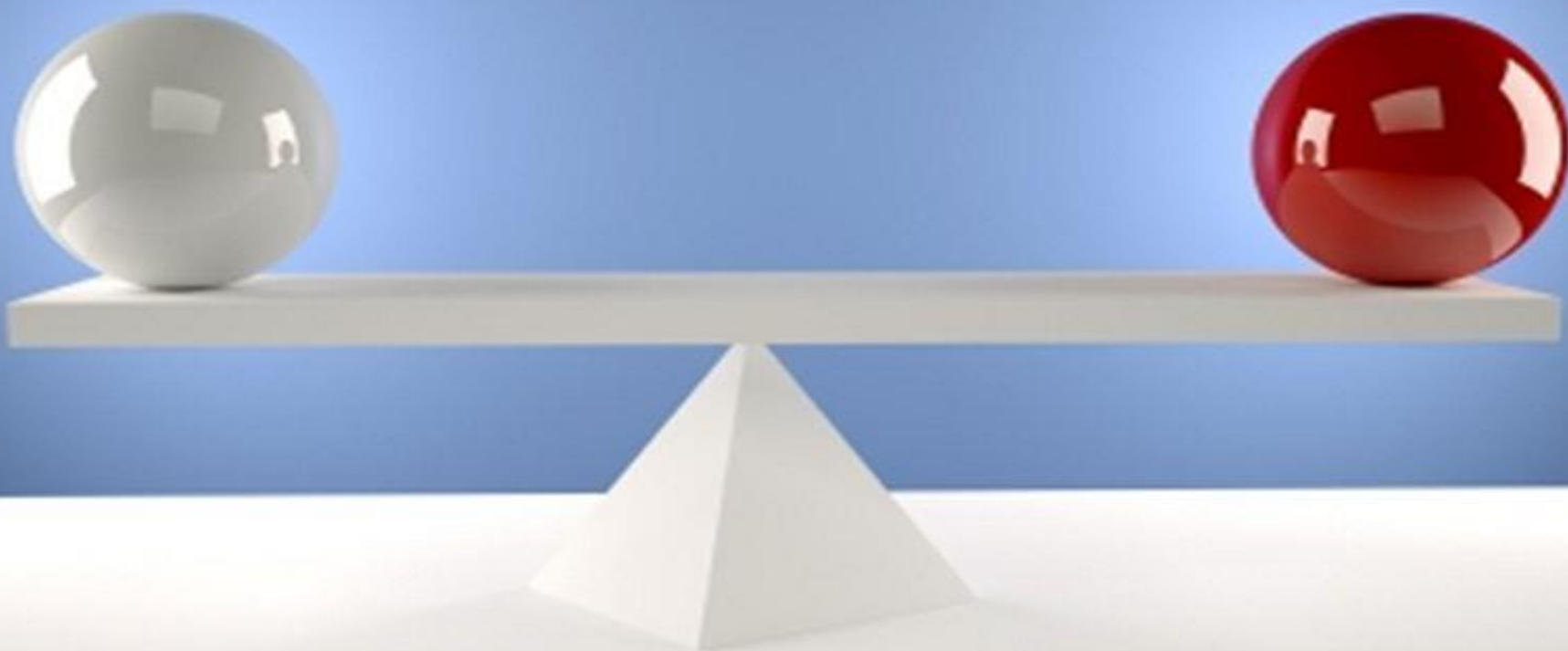
TAFE^{NSW}
HIGHER
EDUCATION

www.tafensw.edu.au/courses/tafe-nsw-degrees



TAFE^{NSW}
HIGHER
EDUCATION

www.tafensw.edu.au/courses/tafe-nsw-degrees





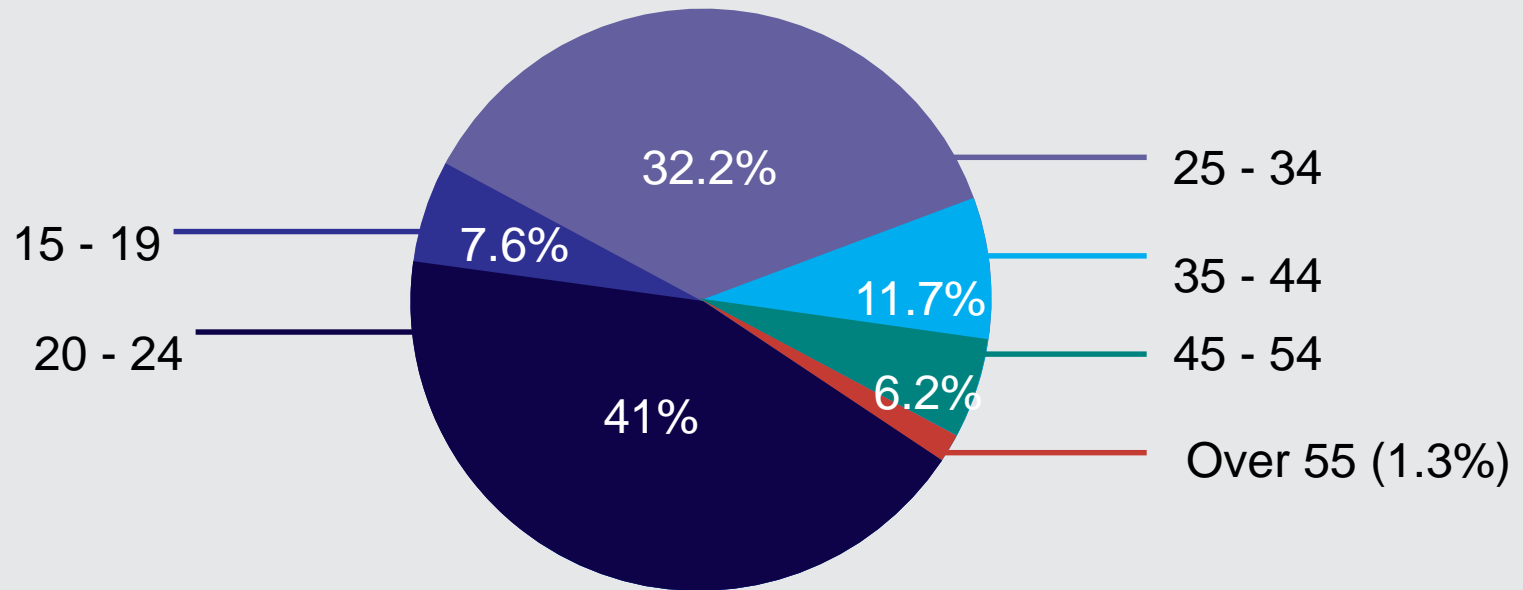
2015 TAFE HE students

- Over 6,000 students
- This is a rise of 8.3% on 2014 (all HEPs ↑ 2.7%)
- 77% studied full time (all HEPs 71%)
- 60% were domestic students (all HEPs 74%)
- 51% men and 49% women*
- Increased regional delivery
- 80.79% success rate of students (NUHEP average of 76.96%, university average in 2008 78.2%)
- Up to 41% low SES in some courses and locations*

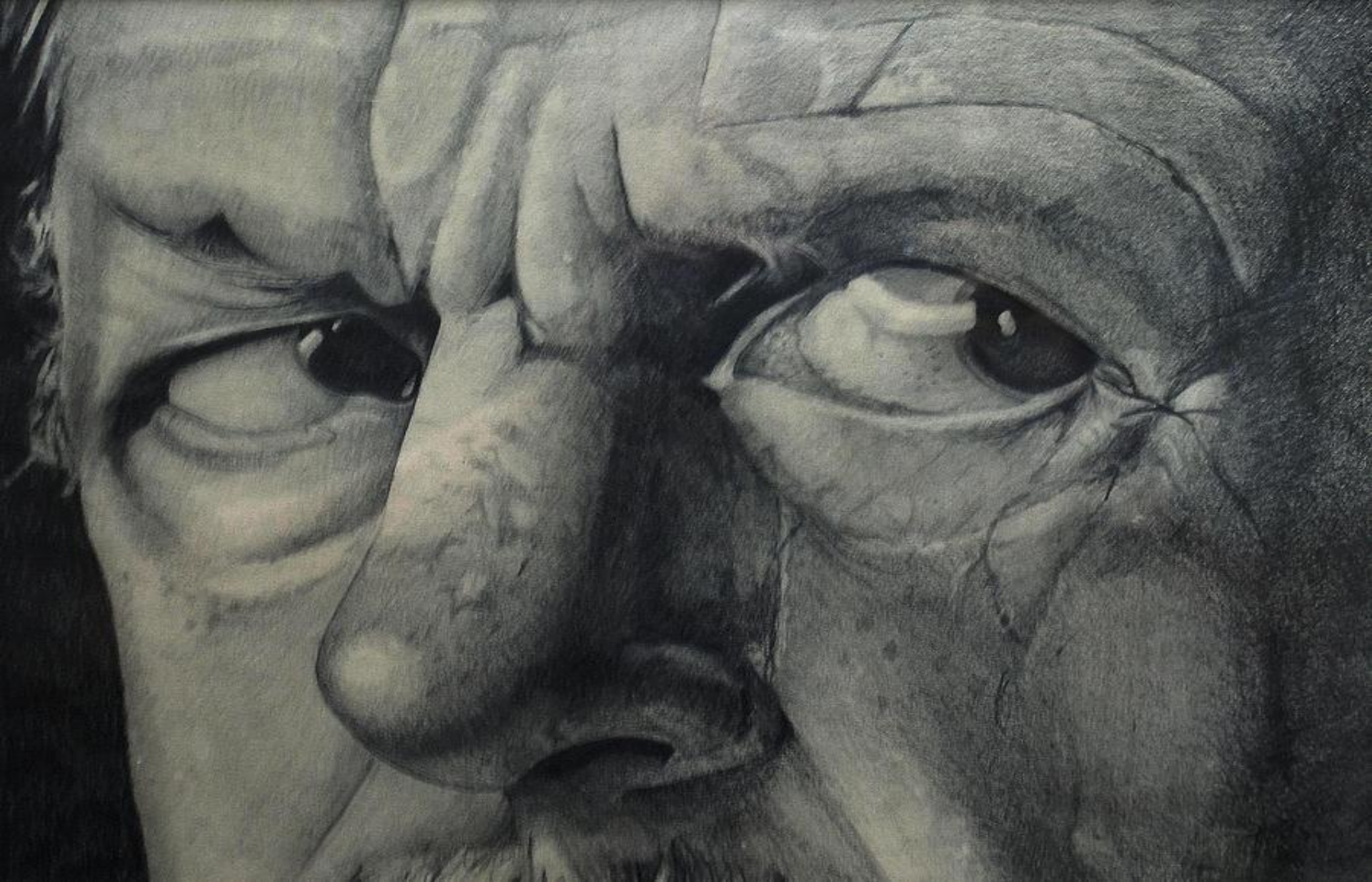
www.education.gov.au/student-data

Higher Education and Research Facts and figures, November 2015, Universities Australia.

Student cohort



Source: 2015 HEIMS data reported to Commonwealth (June 2016)



So the challenge is....

- Recognize TAFE HE difference
- Give TAFE HE students CSPs
- Don't make TAFE HE students pay an additional 25% admin fee on their Fee-Help?
- Support each other in this exciting addition to the HE sector.

FROM PRACTICE TO THEORY:
HIGHER EDUCATION IN TAFE
SEMINAR 2016



SAVE THE DATE
Friday 2 December 2016
Turner Hall, Ultimo

TAFE^{NSW}
HIGHER
EDUCATION



TAFE^{NSW}
HIGHER
EDUCATION

www.tafensw.edu.au/courses/tafe-nsw-degrees